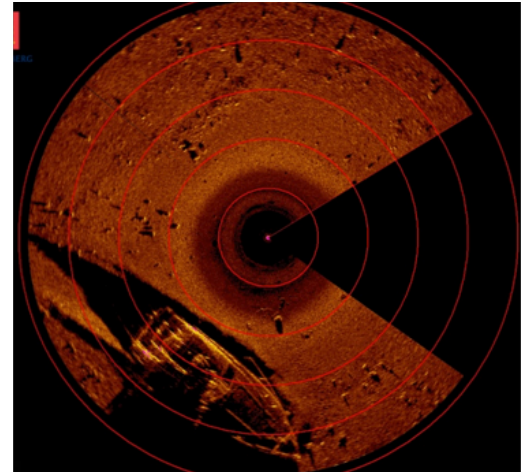
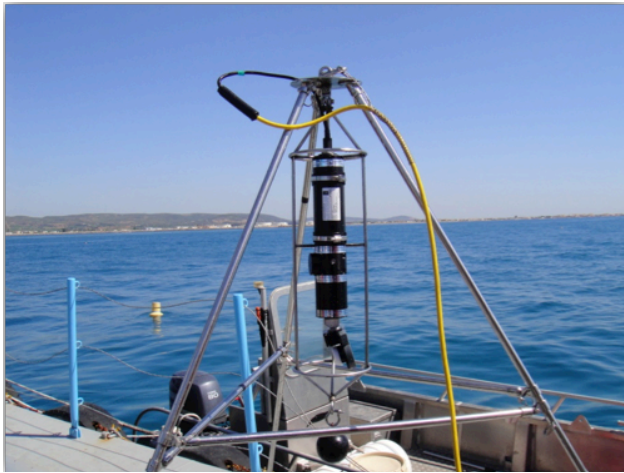


# SONAR HEAD MESOTECH

## HIGH RESOLUTION SCANNING SONAR HEAD



### GENERAL DESCRIPTION

APPLICATIONS	SEARCH ASSIGNMENTS RECOVERY / SALVAGE OPERATIONS CONSTRUCTION TASKS DIVER POSITIONING/SUPPORT MONITORING THE DIVE SITE
BUILDING YEAR	2010
OPERATING FREQUENCY	685 kHz
OPERATING DEPTH	3000 meters
BEAM WIDTH	0,9° X 30 ° FAN (NOMINAL)
RANGE	0,5 – 100 M TYPICAL 150 M OBTAINABLE
RANGE RESOLUTION	≥ 19 MM (@ 1500M/SEC SPEED OF SOUND 25 µS TRANSMIT PULSE)
SAMPLING RESOLUTION	≥ 2,5 MM
SCAN ANGLE	360° CONTINUOUS
MATERIALS	ALUMINUM 6061-T6 300-SERIES SS

### DIMENSIONS

DIAMETER	3,5" / 89 MM
LENGTH	19,2" / 488 MM
TRANSDUCER WIDTH	5,5" / 140 MM

### SURFACE PROCESSOR

MS 1000	"HIGH QUALITY & HIGH RESOLUTION" SIMULTANEOUS SCANNING SONAR HEAD AND ALTIMETER OPERATION, AND SENSOR CONFIGURATIONS TIME-TAGGED RECORDING OF ALL INPUTS ADVANCED TARGET MEASUREMENT AND ANNOTATION TOOLS TRACK PLOTTER MODULE (TO PRE-PLOT SEARCH AND SURVEY LINES, AND TO GEO-REFERENCE SONAR TARGETS) NETWORKING CAPABILITY TARGET TRACKING 3D PROFILING
---------	--

### DIVER SAFETY

UTILIZING SCANNING SONAR BEFORE THE DIVER DESCENDS CAN IDENTIFY POTENTIAL HAZARDS AND PROVIDE CRITICAL INFORMATION FOR EFFECTIVE DIVE PLANNING.

WITH THE MS1000 "TRACK PLOTTER" PROGRAM, THE GEOGRAPHIC POSITION OF THE DIVERS CAN BE UPDATED AND MARKED ON THE DISPLAY.



JIFMAR OFFSHORE SERVICES  
120 Avenue Napoléon Bonaparte  
13100 AIX-EN-PROVENCE  
FRANCE  
Tel : + 33 4 86 82 03 60  
Fax : + 33 4 13 94 08 29  
www.jifmar.com

©No part of this leaflet may be reproduced in any form without written permission from Jifmar Offshore Services. This leaflet may be updated without advance notice.

